

# **API 5 Watt LED Headlight Owner's Manual**



**Item No. AP-5000**

**api**  
anthony products, inc.

# Content

I Brief introduction.....	1
II Performance Summarize.....	1
III Main technical parameters.....	1
IV Requirements of working environment.....	2
V Product list.....	2
VI Product interface.....	2
VII Usage method.....	3
VIII Note.....	4
IX Failure Judgment and Eliminating Methods....	4
X After-sales service warranty.....	5
XI Transportation and storage conditions.....	5
XII Electrical schematic diagram and components list.....	5
XIII Warranty card and Maintenance card.....	6

## I Brief introduction

**Scope of application:** Medical head Light, for medical field except ophthalmology. Wear on the operator, lighting for clinical examination.

**Characteristic:** Medical head Light, operate simple, easy to install ,low-voltage safety. It is used in outpatient, ward and departments in the general hospital, community hospital, army field hospital and so on.

**Product component:** The main Light, supporting parts, power supply box, charger, etc.

## II Performance Summarize

This product design with low voltage output, cold light, adopt green energy-saving light source,its has the following advantages: low-voltage,energy-saving,stable performance, safe and reliable, long service life.

The design and production of this light source strictly executes the first part of the safety requirements of medical electrical equipment GB9706.1-2007: general requirements which is guaranteed in safety.

## III Main technical parameters

Color Temperature	Power	Charger	Power supply time	Battery charging time	Battery capacity
6000±500k	5W	Input: 220V / 50Hz Output: 4.2V 1A	4h	5h	DC3.7V 2600 mAh

## IV Requirements of working environment

- A. Environmental temperature: 5℃~40℃
- B. Relative humidity : ≤85%
- C. The atmosphere: 86.0 kPa~106.0kPa

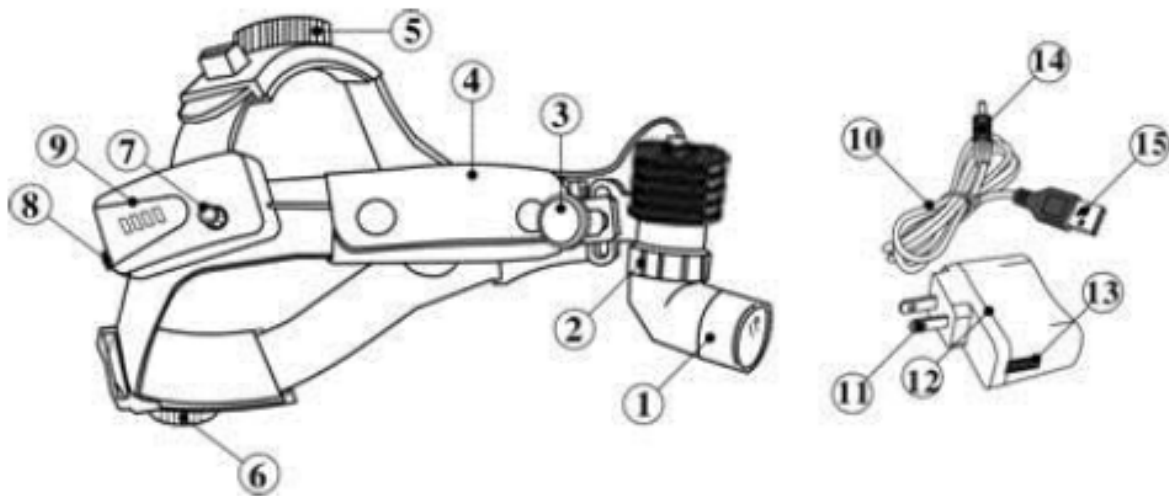
## V Product list

Head light: one

Power box: two

Charger: one

## VI Product interface



- 1.Light holder    2.Light spot adjusting ring    3.Lock switch of the Light head    4.Headband    5.Top tightness-adjusting knob    6.Back tightness-adjusting knob    7.Power switch/brightness-adjusting knob    8.Charging interface of power box    9.Powe box    10.USB wire    11.Internet power plug    12.Charger    13.USB interface    14.Charging plug    15.USB plug

N0.	Material name	Specification	Quantity	Remark
1	Circuit board		1	
2	Socket	2*2.54	1	
3	Fuse	F2A-L250	2	
4	Electric current detection chip	7135	2	
5	Diode	IN4148	1	
6	Integrated circuit	LM393	1	
7	Indicator light	Yellow/Green	2	
8	Integrated circuit	6D6U	1	
9	Power switch	---	1	
10	Resistance	390 $\Omega$ /0.125W	2	
11	Resistance	300K/0.125W	1	
12	Resistance	33K/0.125W	1	

Any products may be updated or improved. The change of circuit or element specifications of the product will not with prior notice.

2017 edition



## **VII Usage method**

Open the packing box, check whether there are missing parts or damage phenomenon of the products according to the product list. If there is any problem, pls contact with the dealer or manufacturer in time to get solved properly.

1.Wear the head Light on head, adjust the tightness-adjusting knob⑤ ⑥ on the top and the back. It is advisable if the Light is stable and you feel comfortable when looking up, down and sway your head.

2. Loosen the lock switch③ to adjust the angle and the height of Light holder. Lock it after it is appropriate.

3. The power switch⑦ that is to say, the light switch, is also the brightness adjusting button. You can get the proper lighting intensity after regulating it.

4.Replace the power supply box:When the brightness decrease obviously,you have to replace the power supply box.

A. Use your forefinger to hold down in front of the box, push backward, the power supply box will be take out.

B. Push the backup power supply box along the direction of the rail to the full degree to get it tight.The power box lack of power need to be charged in time,it will be full of power after the indicator from red to green.

## **VIII Note**

1. When use the battery power supply, you need to charge in time if brightness of the light is significantly weakened.

2. It can't work while charging, please turn off the power switch.

3. You can't use liquid spray cleaners to clean the product.

4. You need to recharge in time when the battery power is not full, or the battery will be scrapped.

5. Battery life is of about 500 times to charge and discharge, please put the abandoned battery into a designated chemical waste.

6.You need fully charge the battery at first time(charging time is 12

hours). Turn off power when you do not use.

7. After filling the electricity, you need to remove the charger plug, otherwise the headlight can't be opened.

## IX Failure Judgment and Eliminating Methods

Fault phenomenon	Fault cause	Solution
Turn on the power switch, the indicator is not bright	Run out of power	Charging in time
	Battery damaged	Replace the same specification battery
	Not remove the charge plug	Remove the charge plug
	Power board fault	Contact with the after-sale service department for solution
Turn on the power switch, the indicator is bright but the Light is not bright	Ligature of Light holder hasn't been connected well	Connect the ligature well
	Bulb is damaged	Replace the bulb
	Not open the spot-adjusting ring	Transfer the spot-adjusting ring clockwise to the maximum

### X After-sales service warranty

Warranty of 18 months, provide maintenance service all user's life.

◆In the warranty period, in normally using, the trouble because of the product quality, the consumer depends on the warranty slip and invoice enjoys free maintenance service.

◆If the error caused by remodel or install other functions which is without our company's permission, is not within the scope of warranty

◆If the model, number, release date is modified, deleted, moved or illegibility, will not enjoy the maintenance service.

◆The error caused by human factor such as falling, squeezing, dip in, wetting, etc. is not within the scope of warranty.

◆Once receiving the goods, please sign and accept it after opening the package to inspect and confirm whether the instrument is crushed, scratched or not. Make sure there is no special unnumbered inside. If the goods are damaged and you did not inspect before sign it, It will be at your own risk.

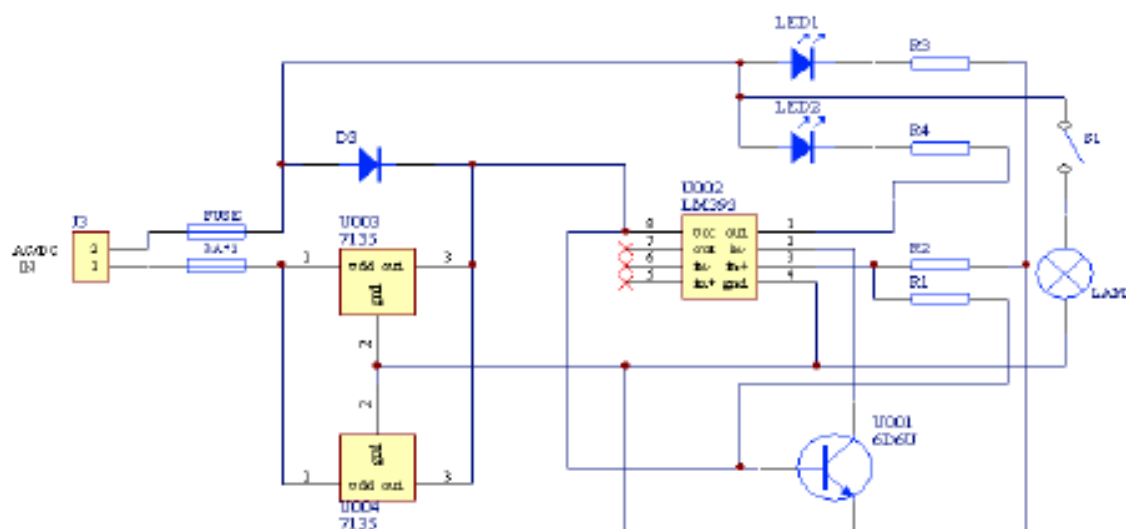
## XI Transportation and storage conditions

A. Environmental temperature:  $-40^{\circ}\text{C} \sim 55^{\circ}\text{C}$

B. Relative humidity :  $\leq 90\%$

C. The atmosphere: 50Kpa~106Kpa

## XII Electrical schematic diagram and components list





## Warranty card

Company name:			
Address			Phone No.
Product name		Model	
Serial Number		Manufacture date	
Sale date			
Fault description:			
Remark: The warranty of our products is 18 months since the release date.			

(Please truthfully fill in this form, cut it according to the dotted line and send it back to our company, thank you for your cooperation)

## Maintenance card

Company name:			
Address			Phone No.
Product name		Model	
Serial Number		Manufacture date	
Sale date			
Fault description:			
Remark: You can enjoy seventy percent discount for the maintenance services even if you use this card over the quality assurance period.			

# **API 5 Watt LED Headlight Owner's Manual**

**7740 Records Street • Indianapolis, IN 46226  
800 428-1610 • (317) 545-6196 • Fax (317) 543-3289  
[www.anthonyproducts.com](http://www.anthonyproducts.com)**